

**ApoD Antibody**  
**Rabbit mAb**  
**Catalog # AP92378**

## Specification

---

### ApoD Antibody - Product Information

Application	WB, IHC
Primary Accession	<a href="#">P05090</a>
Clonality	Monoclonal
<b>Other Names</b>	
ApoD; ApolipoproteinD;	
Isotype	Rabbit IgG
Host	Rabbit
Calculated MW	21276 Da

### ApoD Antibody - Additional Information

Dilution	WB~~1:1000 IHC~~1:100~500
Purification	Affinity-chromatography
Immunogen	A synthesized peptide derived from human ApoD
Description	APOD occurs in the macromolecular complex with lecithin-cholesterol acyltransferase. It is probably involved in the transport and binding of bilin. Appears to be able to transport a variety of ligands in a number of different contexts.
Storage Condition and Buffer	Rabbit IgG in phosphate buffered saline , pH 7.4, 150mM NaCl, 0.02% sodium azide and 50% glycerol. Store at +4°C short term. Store at -20°C long term. Avoid freeze / thaw cycle.

### ApoD Antibody - Protein Information

**Name** APOD

#### Function

APOD occurs in the macromolecular complex with lecithin- cholesterol acyltransferase. It is probably involved in the transport and binding of bilin. Appears to be able to transport a variety of ligands in a number of different contexts.

#### Cellular Location

Secreted.

#### Tissue Location

Expressed in liver, intestine, pancreas, kidney, placenta, adrenal, spleen, fetal brain tissue and

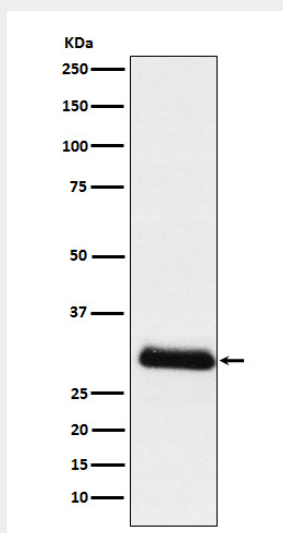
tears

### **ApoD Antibody - Protocols**

Provided below are standard protocols that you may find useful for product applications.

- [Western Blot](#)
- [Blocking Peptides](#)
- [Dot Blot](#)
- [Immunohistochemistry](#)
- [Immunofluorescence](#)
- [Immunoprecipitation](#)
- [Flow Cytometry](#)
- [Cell Culture](#)

### **ApoD Antibody - Images**



Western blot analysis of ApoD expression in Human plasma lysate.